



Military Close

Shoeburyness

£220,000



Military Close



Description

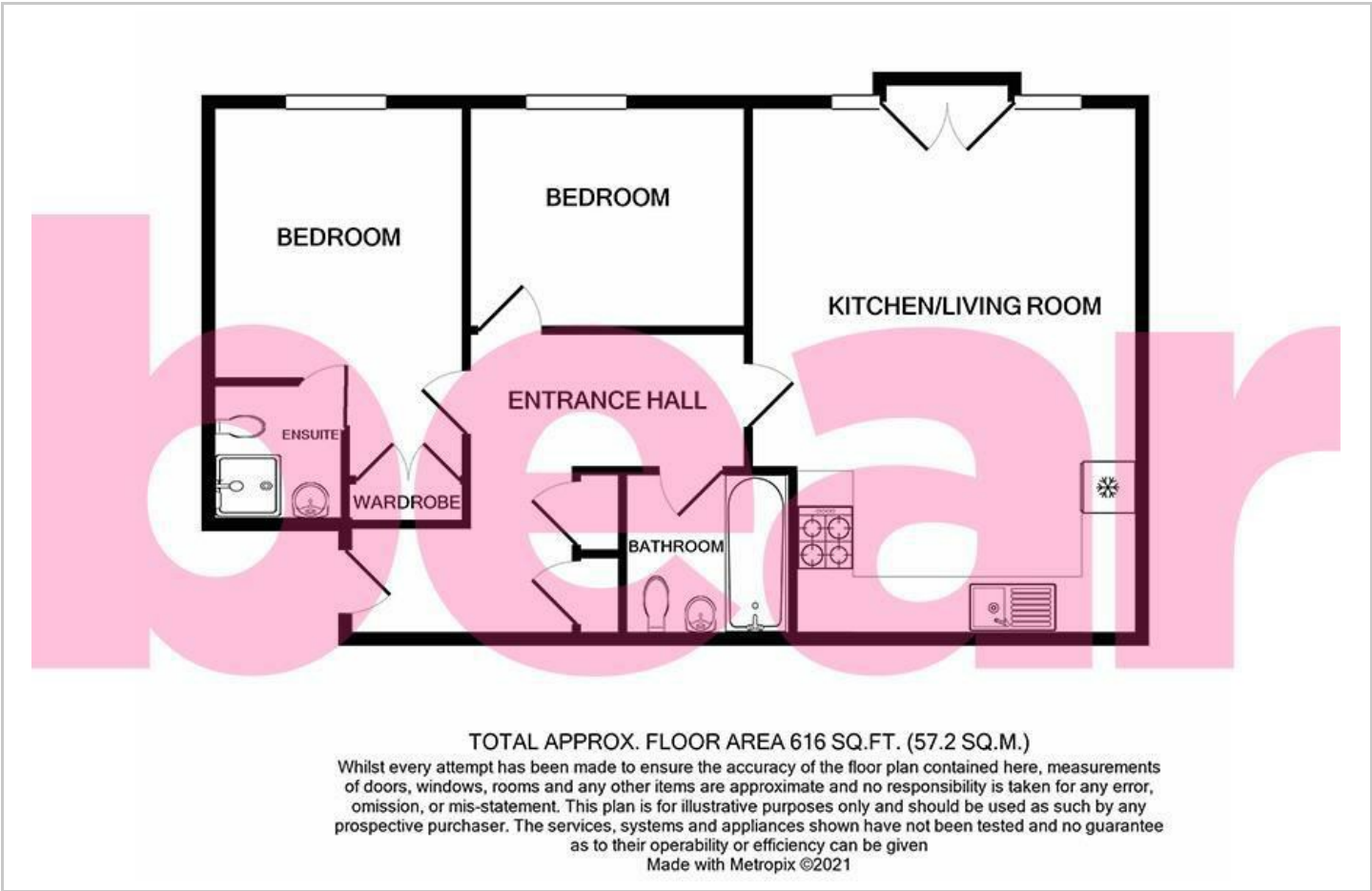
*NO ONWARD CHAIN * Perfectly presented two DOUBLE bedroom flat in Shoeburyness close to local amenities and convenient TRAVEL LINKS. Offers TWO BATHROOMS, open plan living accommodation and allocated OFF-STREET PARKING FOR ONE VEHICLE.

- Two Double Bedroom First Floor Flat
- No Onward Chain
- Allocated Off-street Parking for One Vehicle
- Gas Central Heating
- Walking Distance to Travel Links
- Open Plan Kitchen/Living Area
- En-suite to Master Bedroom
- Double Glazing
- Close to Amenities
- Perfect for First Time Buyers





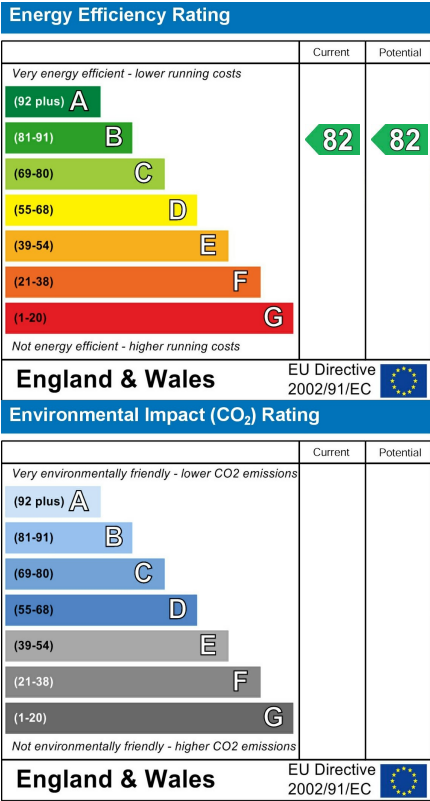
Floor Plan



Area Map



Energy Efficiency Graph



Viewing

Please contact our Southend-on-Sea Office on 01702 811211 if you wish to arrange a viewing appointment for this property or require further information.

These particulars, whilst believed to be accurate are set out as a general outline only for guidance and do not constitute any part of an offer or contract. Intending purchasers should not rely on them as statements of representation of fact, but must satisfy themselves by inspection or otherwise as to their accuracy. No person in this firms employment has the authority to make or give any representation or warranty in respect of the property.

Beech House, 1 Journeymans Way, Temple Farm Industrial Estate, Southend-on-Sea, Essex, SS2 5TF

Office: 01702 811211 info@bearestateagents.co.uk www.bearestateagents.co.uk